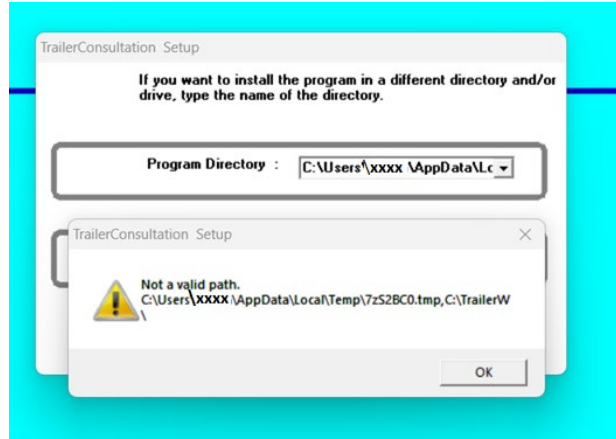


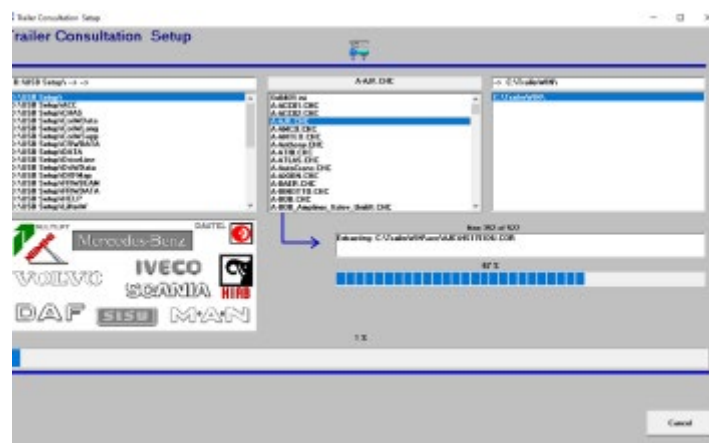
TrwSetup fix 2024-09

Valid for: Computers where old version of TrailerWIN has been installed and following error occurs, note background color from older version of setup:



Description: New Installshield-setup launch an old version of TrWSetup causing the path to installation to fail.

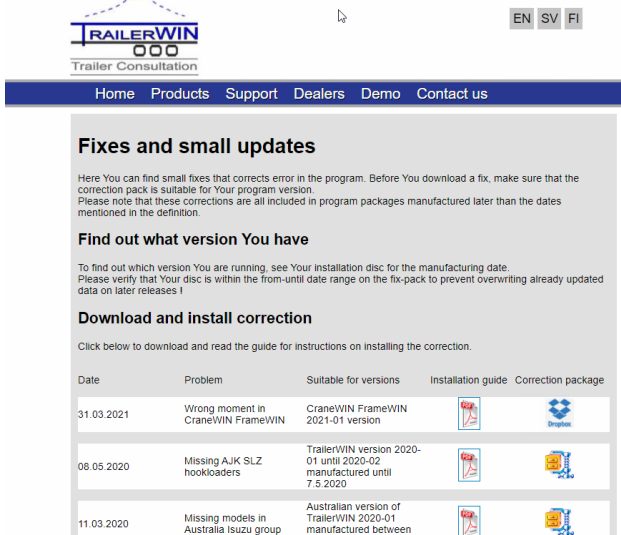
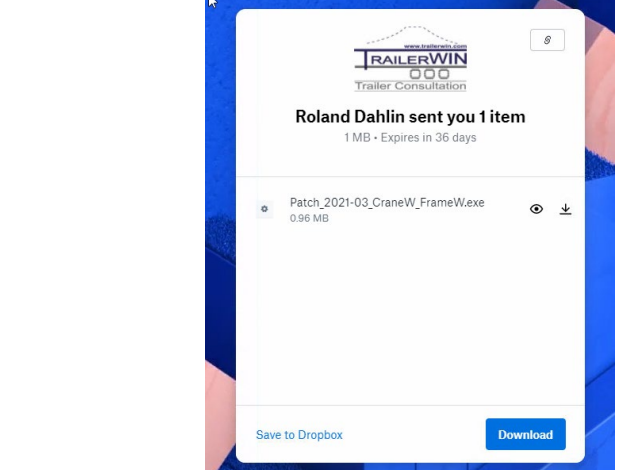


Solution: Replacing the TrWSetup.exe with new version usually solves the problem. Below screenshot from new setup with gray background:

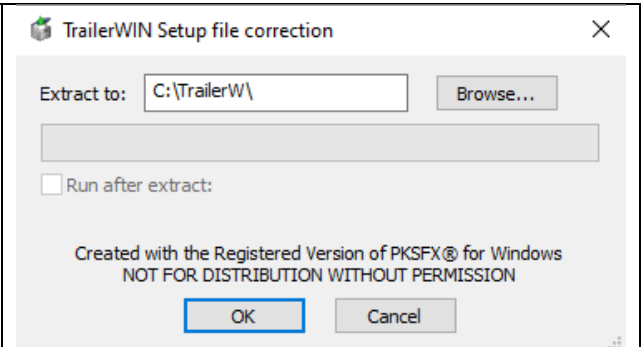
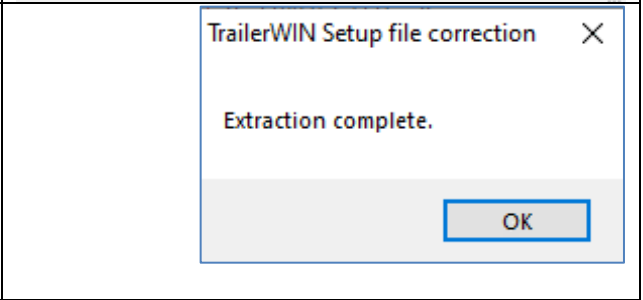


Steps:

Click on the drobbox Correction package -link on Fixes-page.

Note: Following instructions and pictures are examples.

<p>Close the TrailerWIN setup</p> <p>Click on the Dropbox Icon for the patch TrWSetup_fix_2024-09.exe</p>	
<p>Choose Download (Note that the pictures are only for illustration and you need to here use the correct patch)</p>	
<p>Open the file</p>	
<p>Allow app to run in UAC Click on "Yes" to run the package.</p>	

<p>When patch opens Select the directory where TrailerWIN is installed, by default you will get C:\TrailerW\ but if you have installed elsewhere click on Browse and step to the correct directory.</p> <p>Click Ok</p>	
<p>Extraction complete. Restart the update and to verify it runs ok</p>	

If problem persists: [Please contact Trailer Consultation](#)

E-mail: info@trailerwin.com